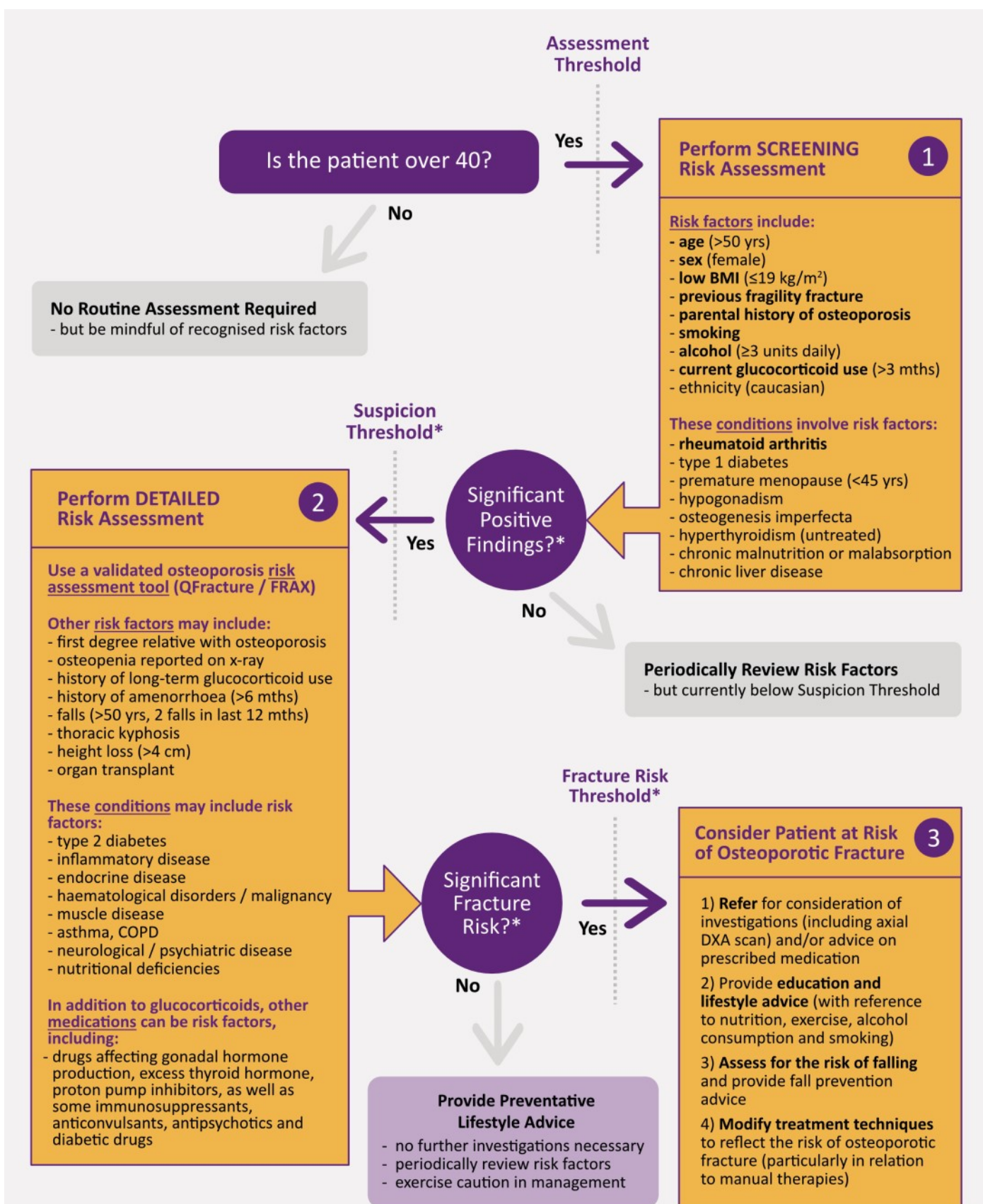




Osteoporosis Assessment and Management Flowchart



*the point at which the "Suspicion Threshold" or the "Fracture Risk Threshold" is breached, is a clinical judgement that will depend on the individual circumstances of each patient, but informed by the number and weight of any positive risk factors, as well as the results of any validated osteoporosis risk assessment tools (where further investigations are usually deemed appropriate when the 10 year risk of major fracture is over 10%, although this can be lower depending on age).